

PRODUCT INFORMATION PACKET

Model No: 056C64DRS40002A1

Catalog No: C419A

0.50,0.17 HP 2 speed Fan and Blower HVAC/R Motor, 1 phase, 1800/1200 RPM, 115 V, 56 Frame, ODP
Self Cooled Motors



Regal and Marathon are trademarks of Regal Beloit Corporation or one of its affiliated companies.
©2021 Regal Beloit Corporation, All Rights Reserved. MC017097E

REGAL



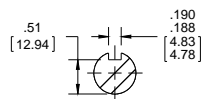
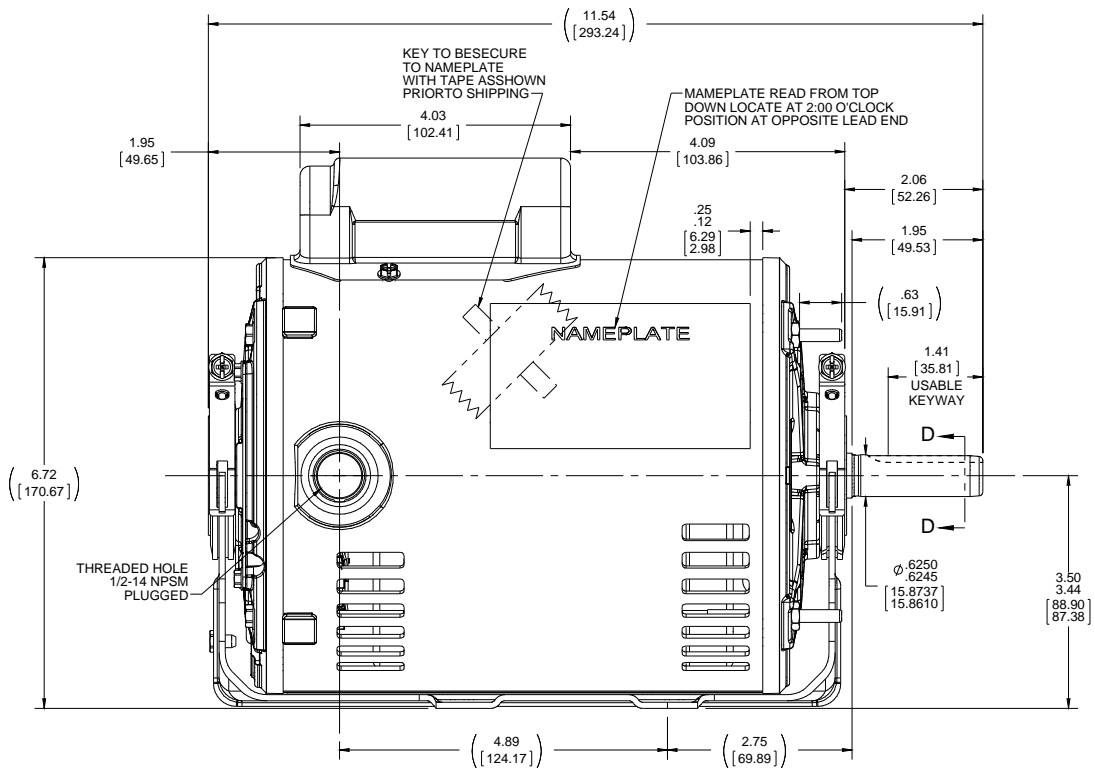
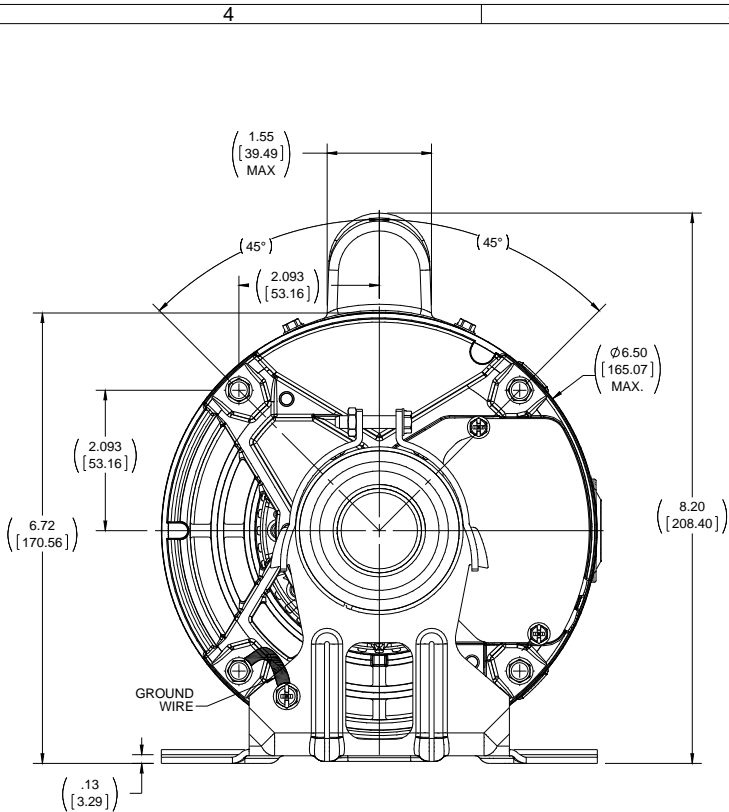
Nameplate Specifications

Output HP	0.50,0.17 Hp	Output KW	0.37 kW
Frequency	60 Hz	Voltage	115 V
Current	7.7,4.7 A	Speed	1725,1140 rpm
Service Factor	1.25	Phase	1
Efficiency	64 %	Power Factor	66
Duty	Continuous	Insulation Class	B
Design Code	2VT	KVA Code	L
Frame	56	Enclosure	Drip Proof
Thermal Protection	Automatic	Ambient Temperature	40 °C
Drive End Bearing Size	6203	Opp Drive End Bearing Size	6203
UL	Recognized	CSA	Y
CE	Y	IP Code	22

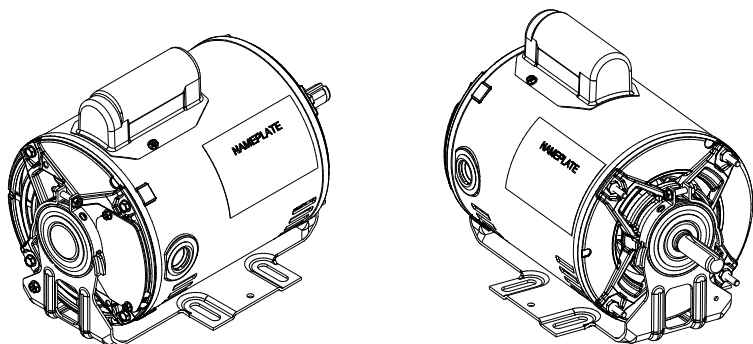
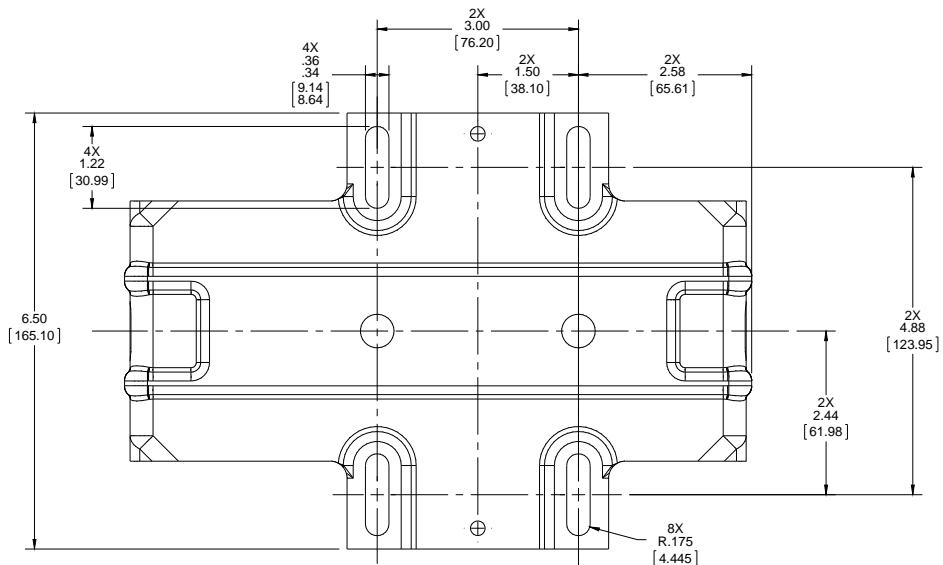
Technical Specifications

Electrical Type	Capacitor Start Induction Run	Starting Method	Across The Line
Poles	4//6	Rotation	Selective Counterclockwise
Resistance Main	4.86 Ohms	Mounting	Resilient Base
Motor Orientation	Horizontal	Drive End Bearing	Ball
Opp Drive End Bearing	Ball	Frame Material	Rolled Steel
Shaft Type	NEMA 56	Overall Length	11.54 in
Frame Length	7.15 in	Shaft Diameter	0.625 in
Shaft Extension	2.06 in	Assembly/Box Mounting	F1 ONLY
Outline Drawing	OL56100128-001	Connection Drawing	CDCM101

This is an uncontrolled document once printed or downloaded and is subject to change without notice. Date Created:20/01/2021



SECTION D-D



DRAWING REVISION A	REVISION BY R. ZAMARRON	DATE 06-24-2016	TOLERANCES UNLESS OTHERWISE SPECIFIED:			DRAWN BY R. ZAMARRON
ECO ECO-0104437	APPROVED BY J. ORTEGA	DATE 06-24-2016	DEC.	INCH	mm	ANGLE
NEW MODEL RELEASE			.XX	+0.1	[2.5]	± 30°
COPYRIGHT REGAL BELOIT AMERICA, INC. ALL RIGHTS RESERVED.			.XX	+0.02	[0.51]	
PROPRIETARY AND CONFIDENTIAL INFORMATION. THIS DOCUMENT IS THE PROPERTY OF REGAL BELOIT AMERICA, INC. (OWNERS) AND CONTAINS OWNERS PROPRIETARY INFORMATION. ANY PERSON, CORPORATION OR OTHER FIRM RECEIVING IT IS DEEMED, BY RECEIVING IT, TO AGREE THAT IT, AND/OR ANY PART OF IT, SHALL NOT BE DISCLOSED TO ANY PERSON, CORPORATION OR OTHER ENTITY, DUPLICATED, AND/OR USED, EXCEPT AS EXPRESSLY APPROVED IN WRITING IN ADVANCE BY OWNER. THIS DOCUMENT SHALL BE RETURNED TO OWNER UPON REQUEST. IT MAY BE SUBJECT TO CERTAIN RESTRICTIONS UNDER APPLICABLE EXPORT CONTROL LAWS AND REGULATIONS.			.XXX	+0.005	[0.127]	
REMOVE BURRS & BREAK SHARP EDGES: .0031 015 [0.76381]			.XXXX	+0.0005	[0.0127]	
CORNER FILLETS: .02 [0.51]			MACHINED SURFACES: 200		INCH	5:1
			mm SHOWN IN [BRACKETS]		mm	mm

APPROVED BY J. ORTEGA	DESCRIPTION OUTLINE 56FR, DP, 1-PHASE	MATERIAL	PROCESS/FINISH
DATE 06-24-2016	REFERENCE	THIRD ANGLE PROJECTION	SIZE C
DRAWING NUMBER OL56100128-001	SHEET 1 OF 1		



**P.O. BOX 8003
WAUSAU, WI 54401-8003
PH. 715-675-3311**

CERTIFICATION DATA SHEET

CUSTOMER DATA SHEET

CUSTOMER

PO #:

MODEL #: 56C64DRS40002A1 A

CUSTOMER PART

#:

MOUNTING: F1 ONLY

CUSTOMER:

ORDER #:

CONN. DIAGRAM: CDCM101

OUTLINE: 0L56100128-001

WINDING #: NCS6(4-6)1 1A

TYPICAL MOTOR PERFORMANCE DATA

HP	KW	SYNC. RPM	F.L. RPM	FRAME	ENCLOSURE	KVA CODE	DESIGN	
1/2&0.16	0.37&0.25	1200	1725&1140	56	DP	L	2VT	
PH	HZ	VOLTS	AMPS	START TYPE	DUTY	INSL	S.F.	AMB°C
1	60/60	115&115	7.7&4.7	ACROSS THE LINE	CONTINUOUS	B3	1.25/1.25	40

FULL LOAD EFF:	64	3/4 LOAD EFF:	37.5	1/2 LOAD EFF:	30	GTD. EFF	ELEC. TYPE
FULL LOAD PF:	66	3/4 LOAD PF:	48	1/2 LOAD PF:	41.5	0	CAP START IND RUN

F.L. TORQUE	LOCKED ROTOR AMPS	L.R. TORQUE	B.D. TORQUE	F.L. RISE°C		
12 OZ-FT	39.8	34.23 OZ-FT	285 %	30.74 OZ-FT	256 %	-

SOUND PRESSURE @ 3 FT.	SOUND POWER	ROTOR WK^2	MAX. WK^2	SAFE STALL TIME	STARTS / HOUR	APPROX. MOTOR WGT
0 DBA	10 DBA	0 LB-FT^2	0 LB-FT^2	0 SEC.	0	0 LBS.

*** SUPPLEMENTAL INFORMATION ***

DE BRACKET TYPE	ODE BRACKET TYPE	MOUNT TYPE	ORIENTATION	SEVERE DUTY	HAZARDOUS LOCATION	DRIP COVER	SCREENS	PAINT
STANDARD	STANDARD	RESILIENT BASE	HORIZONTAL	FALSE	NONE	FALSE	NONE	BLACK (POWDER)

BEARINGS		GREASE	SHAFT TYPE	SPECIAL DE	SPECIAL ODE	SHAFT MATERIAL	FRAME MATERIAL
DE	ODE						
BALL	BALL	POLYREX EM	STANDARD 56	NONE	NONE	AISI 1215 (MS1000)	ROLLED STEEL
6203	6203						

THERMO-PROTECTORS						THERMISTORS			SPACE HEATERS	
THERMOSTATS	PROTECTORS	WDG RTDS	BRG RTDS							
NONE	AUTOMATIC	NONE	NONE	NONE	NONE	FALSE	NONE	NONE	NONE	VOLTS

* INVERTER TORQUE: NONE
INV. HP SPEED RANGE: NONE

N ENCODER: NONE
NONE NONE
NONE NONE PPR

T BRAKE: NONE NONE
NONE P/N NONE
NONE NONE
S FT-LB NONE V NONE HZ

*

PREPARED BY: Bhargavi Dontham

DATE: 08/29/2018 04:07:37 AM

FORM 3531 REV.3 02/07/99

** Subject to change without notice.



**P.O. BOX 8003
WAUSAU, WI 54401-8003
PH. 715-675-3311**

CERTIFICATION DATA SHEET

CUSTOMER DATA SHEET

CUSTOMER

PO #:

MODEL #: 56C64DRS40002A1 A

CUSTOMER PART

#:

MOUNTING: F1 ONLY

CUSTOMER:

ORDER #: CDCM101

CONN. DIAGRAM: CDCM101

OUTLINE: 0L56100128-001

WINDING #: NCS6(4-6)1 1A

TYPICAL MOTOR PERFORMANCE DATA

HP	KW	SYNC. RPM	F.L. RPM	FRAME	ENCLOSURE	KVA CODE	DESIGN	
1/2&0.16	0.37&0.25	1800	1725&1140	56	DP	L	2VT	
PH	Hz	VOLTS	AMPS	START TYPE	DUTY	INSL	S.F.	AMB°C
1	60/60	115&115	7.7&4.7	ACROSS THE LINE	CONTINUOUS	B3	1.25/1.25	40

FULL LOAD EFF:	64	3/4 LOAD EFF:	61	1/2 LOAD EFF:	54	GTD. EFF	ELEC. TYPE
FULL LOAD PF:	66	3/4 LOAD PF:	58	1/2 LOAD PF:	47	59.5	CAP START IND RUN

F.L. TORQUE	LOCKED ROTOR AMPS	L.R. TORQUE	B.D. TORQUE	F.L. RISE°C		
24 OZ-FT	40.6	37.12 OZ-FT	155 %	62.3 OZ-FT	260 %	-

SOUND PRESSURE @ 3 FT.	SOUND POWER	ROTOR WK^2	MAX. WK^2	SAFE STALL TIME	STARTS / HOUR	APPROX. MOTOR WGT
0 DBA	10 DBA	0 LB-FT^2	0 LB-FT^2	0 SEC.	0	0 LBS.

*** SUPPLEMENTAL INFORMATION ***

DE BRACKET TYPE	ODE BRACKET TYPE	MOUNT TYPE	ORIENTATION	SEVERE DUTY	HAZARDOUS LOCATION	DRIP COVER	SCREENS	PAINT
STANDARD	STANDARD	RESILIENT BASE	HORIZONTAL	FALSE	NONE	FALSE	NONE	BLACK (POWDER)

BEARINGS		GREASE	SHAFT TYPE	SPECIAL DE	SPECIAL ODE	SHAFT MATERIAL	FRAME MATERIAL
DE	ODE						
BALL	BALL	POLYREX EM	STANDARD 56	NONE	NONE	AISI 1215 (MS1000)	ROLLED STEEL
6203	6203						

THERMO-PROTECTORS				THERMISTORS			SPACE HEATERS	
THERMOSTATS	PROTECTORS	WDG RTDS	BRG RTDS					
NONE	AUTOMATIC	NONE	NONE	NONE	FALSE	NONE	NONE	VOLTS

* INVERTER TORQUE: NONE
INV. HP SPEED RANGE: NONE

N ENCODER: NONE
NONE NONE
NONE NONE PPR

T BRAKE: NONE NONE
NONE P/N NONE
NONE NONE
S FT-LB NONE V NONE HZ

*

PREPARED BY: Bhargavi Dontham

DATE: 08/29/2018 04:07:37 AM

FORM 3531 REV.3 02/07/99

** Subject to change without notice.

MARATHON ELECTRIC CORPORATION

TYPICAL PERFORMANCE CURVE for AC MOTOR

Customer WW Grainger

Curve at

115

Volts

HP 0.5&0.16

PHASE 1

Model No 56C64DRS40002A1

60

HZ

VOLTS 115&115

0.5

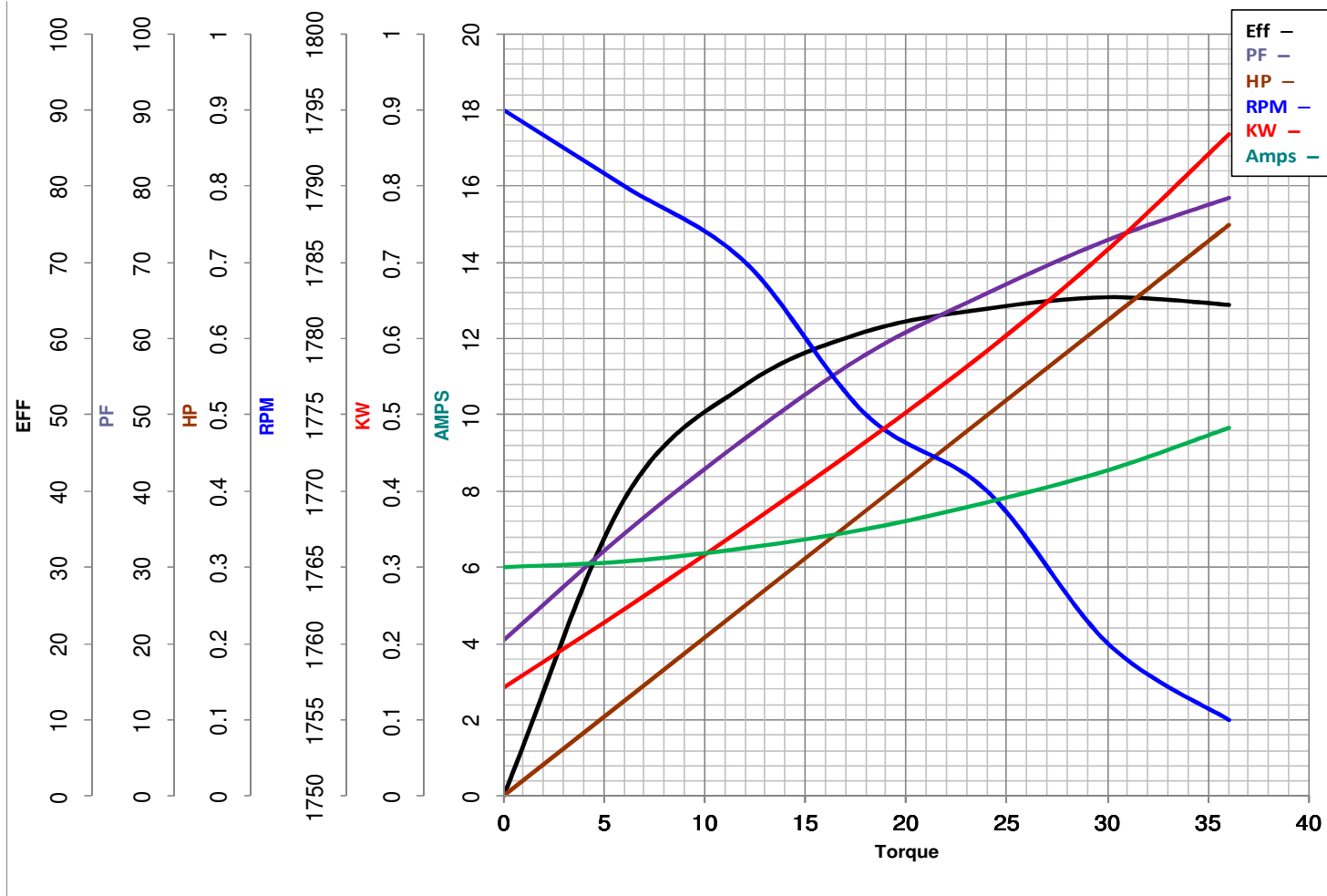
HP

Catalog No C419A

HIGH SPEED

HZ 60&60

RPM 1725&1140



Torque in Oz.Ft

FL TORQUE 24 Oz.Ft

BD TORQUE 62.3 Oz.Ft

LR TORQUE 37.12 Oz.Ft

FL AMPS 7.7

PU TORQUE 27.1 Oz.Ft

LR AMPS 40.6

WINDING NC56(4-6)1-1

Prepared By

BHARGAVI

Date

8/27/2018

MARATHON ELECTRIC CORPORATION

TYPICAL PERFORMANCE CURVE for AC MOTOR

Customer WW Grainger

Curve at 115

Volts

HP 0.5&0.16

PHASE 1

Model No 56C64DRS40002A1

60
0.16

HZ
HP

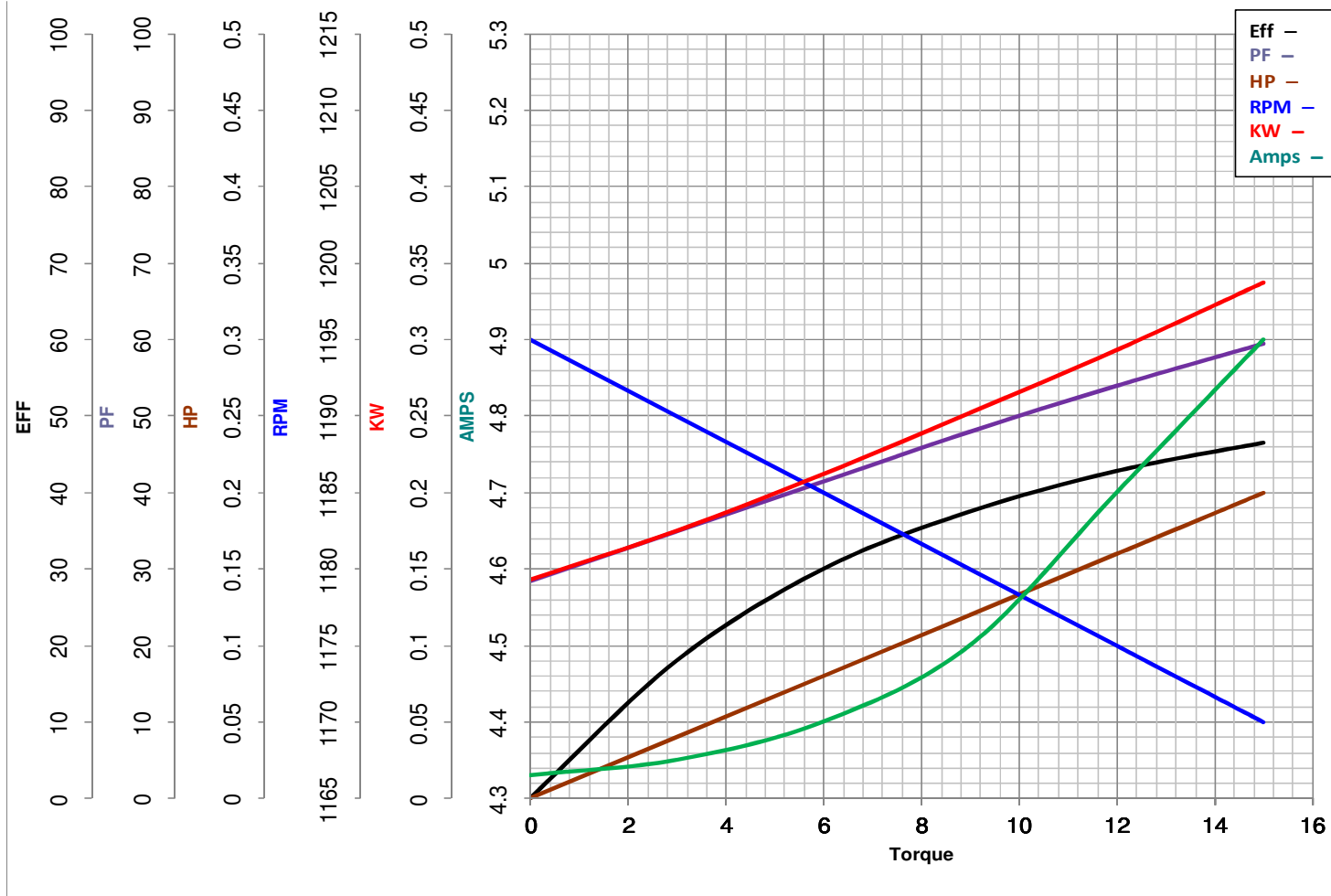
VOLTS 115&115

Catalog No C419A

LOW SPEED

HZ 60&60

RPM 1725&1140



Torque in Oz.Ft

FL TORQUE 12 Oz.Ft
 BD TORQUE 30.7 Oz.Ft
 LR TORQUE 34.23 Oz.Ft

FL AMPS 7.7
 PU TORQUE 23.9 Oz.Ft
 LR AMPS 39.8

WINDING NC56(4-6)1-1

Prepared By BHARGAVI

Date 8/27/2018